

— MWGen – Waukegan Station
New Wells and ELUC

Project 18311.31 —


MWG13-15_14524

Comp. E, 264

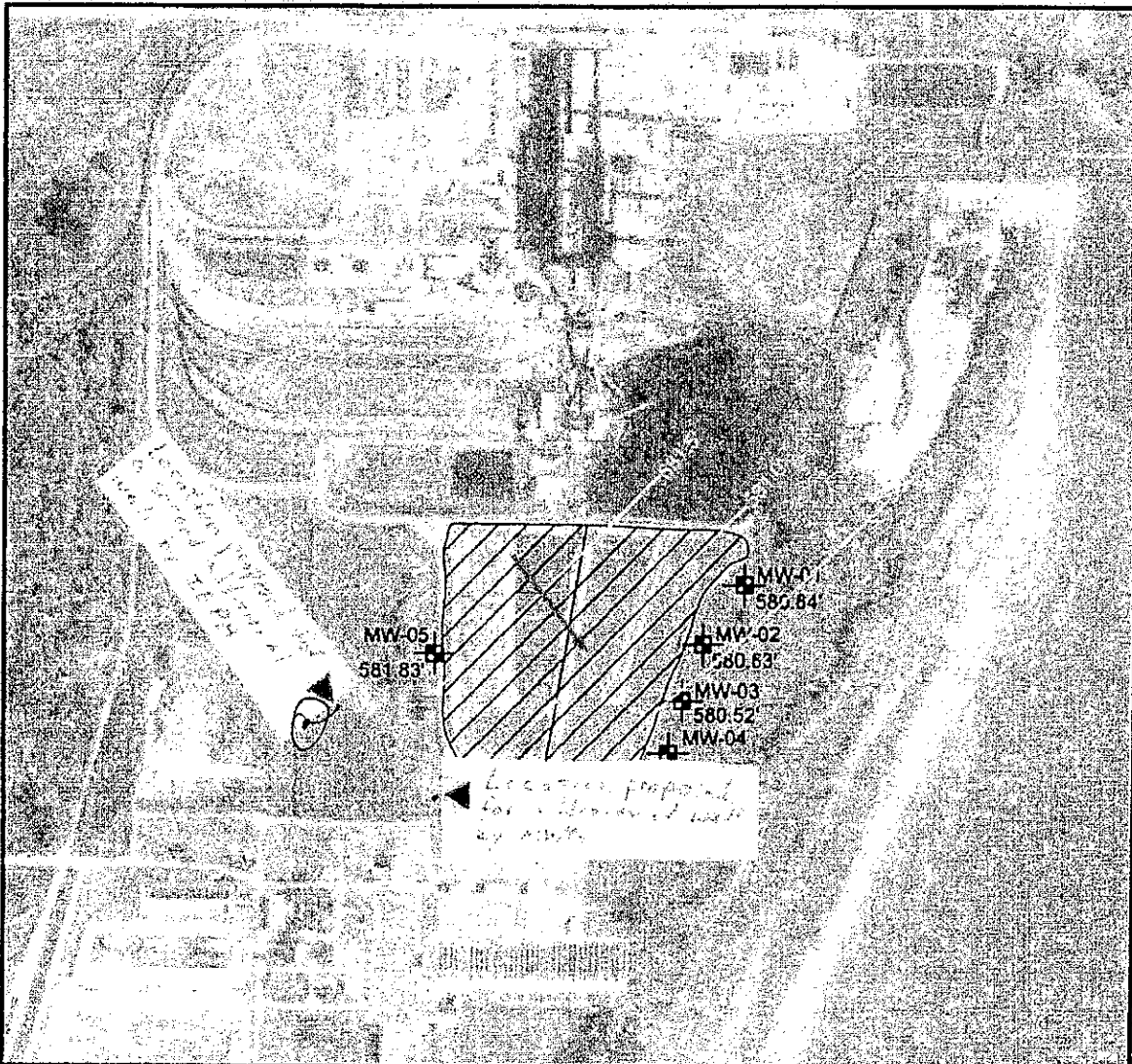
Table 2
Groundwater Elevation Data
Waukegan Station, Waukegan, Illinois
Midwest Generation
21153.033

PATRICK ENGINEERING	Date	Water Elevation	Depth to Water Pre-Purge	Depth to Water Pre-Sampling	Water Elevation Pre-Sampling	Depth to Bottom of Well	Bottom of Well Elevation	Ground Elevation	Top of Riser Elevation
	MONITORING WELLS								
MW-1	3/24/2011	581.725	21.41	21.41	581.725	32.18	570.955	603.462	603.135
	6/13/2011	583.335	19.80	19.81	583.325	32.18	570.955	603.462	603.135
	9/13/2011	581.135	22.00	22.00	581.135	32.18	570.955	603.462	603.135
	12/6/2011	581.145	21.99	21.99	581.145	32.18	570.955	603.462	603.135
	3/14/2012	581.175	21.96	21.96	581.175	32.18	570.955	603.462	603.135
	6/18/2012	580.855	22.28	22.28	580.855	32.18	570.955	603.462	603.135
	9/28/2012	579.645	23.49	23.49	579.645	32.18	570.955	603.462	603.135
	12/19/2012	579.415	23.72	23.72	579.415	32.18	570.955	603.462	603.135
MW-2	3/24/2011	581.663	21.38	21.32	581.723	29.56	573.483	603.283	603.043
	6/13/2011	583.313	19.73	19.73	583.313	29.56	573.483	603.283	603.043
	9/13/2011	581.193	21.85	21.85	581.193	29.56	573.483	603.283	603.043
	12/6/2011	581.223	21.82	21.82	581.223	29.56	573.483	603.283	603.043
	3/14/2012	581.233	21.81	21.83	581.213	29.56	573.483	603.283	603.043
	6/18/2012	580.893	22.15	22.15	580.893	29.56	573.483	603.283	603.043
	9/28/2012	579.733	23.31	23.31	579.733	29.56	573.483	603.283	603.043
	12/19/2012	579.273	23.77	23.77	579.273	29.56	573.483	603.283	603.043
MW-3	3/24/2011	581.746	21.15	21.16	581.736	29.84	573.056	603.178	602.896
	6/13/2011	583.336	19.56	19.56	583.336	29.84	573.056	603.178	602.896
	9/13/2011	581.176	21.72	21.72	581.176	29.84	573.056	603.178	602.896
	12/6/2011	581.216	21.68	21.68	581.216	29.84	573.056	603.178	602.896
	3/14/2012	581.216	21.68	21.68	581.216	29.84	573.056	603.178	602.896
	6/18/2012	580.916	21.98	21.98	580.916	29.84	573.056	603.178	602.896
	9/28/2012	579.676	23.22	23.22	579.676	29.84	573.056	603.178	602.896
	12/19/2012	579.446	23.45	23.45	579.446	29.84	573.056	603.178	602.896
MW-4	3/24/2011	581.831	21.32	21.38	581.771	29.85	573.301	603.525	603.151
	6/13/2011	583.351	19.80	19.80	583.351	29.85	573.301	603.525	603.151
	9/13/2011	581.191	21.96	21.96	581.191	29.85	573.301	603.525	603.151
	12/6/2011	581.231	21.92	21.92	581.231	29.85	573.301	603.525	603.151
	3/14/2012	581.201	21.95	21.95	581.201	29.85	573.301	603.525	603.151
	6/18/2012	580.881	22.27	22.27	580.881	29.85	573.301	603.525	603.151
	9/28/2012	579.551	23.60	23.60	579.551	29.85	573.301	603.525	603.151
	12/19/2012	579.341	23.81	23.81	579.341	29.85	573.301	603.525	603.151

Table 2
Groundwater Elevation Data
Waukegan Station, Waukegan, Illinois
Midwest Generation
21153.033

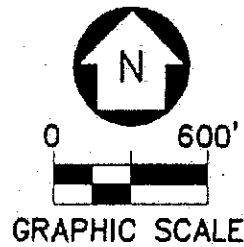
	Date	Water Elevation	Depth to Water Pre-Purge	Depth to Water Pre-Sampling	Water Elevation Pre-Sampling	Depth to Bottom of Well	Bottom of Well Elevation	Ground Elevation	Top of Riser Elevation
MW-5	3/24/2011	583.430	21.41	21.41	583.430	31.92	572.920	601.526	604.840
	6/13/2011	584.550	20.29	20.28	584.560	31.92	572.920	601.526	604.840
	9/13/2011	582.660	22.18	22.20	582.640	31.92	572.920	601.526	604.840
	12/6/2011	582.820	22.02	22.02	582.820	31.92	572.920	601.526	604.840
	3/14/2012	582.980	21.86	21.86	582.980	31.92	572.920	601.526	604.840
	6/18/2012	582.220	22.62	22.62	582.220	31.92	572.920	601.526	604.840
	9/28/2012	581.130	23.71	23.71	581.130	31.92	572.920	601.526	604.840
	12/19/2012	580.650	24.19	24.19	580.650	31.92	572.920	601.526	604.840
MW-6	12/19/2012	580.885	8.84	8.84	580.885	17.70	572.025	586.745	589.725
MW-7	12/19/2012	579.570	18.72	18.72	579.570	27.96	570.330	595.870	598.290

Notes- Elevations are leveled from site control points per Commonwealth Edison Drawing "Coordinates & Elevations for Coal Monuments & Test Borings-Waukegan" revised 12/1/1999
- Elevations are shown in feet



LEGEND

- MW-01 580.64' MONITORING WELL LOCATION (NOVEMBER 2010) WITH GROUNDWATER ELEVATION (FT. / MSL)
- GROUNDWATER FLOW DIRECTION
- POTENTIOMETRIC SURFACE CONTOUR (FT. / MSL)



AERIAL IMAGE SOURCE:
LANDISOR AERIAL INFORMATION INC., JULY 2008

Date: FEB. 2011	FIGURE 5 POTENTIOMETRIC SURFACE MAP WAUKEGAN STATION WAUKEGAN, ILLINOIS	 <small>4970 Zephyr Drive Urdy, Illinois 62932-4101 PROFESSIONAL DESIGN FIRM LICENSE NO. 184-009409</small> <small>TEL: (630) 756-1200 FAX: (630) 724-1531</small>
Proj No.: 21053.070		
App. By: RMF		

Phillip J. Patton
631-414-0407



N

0 900'
APPROXIMATE SCALE

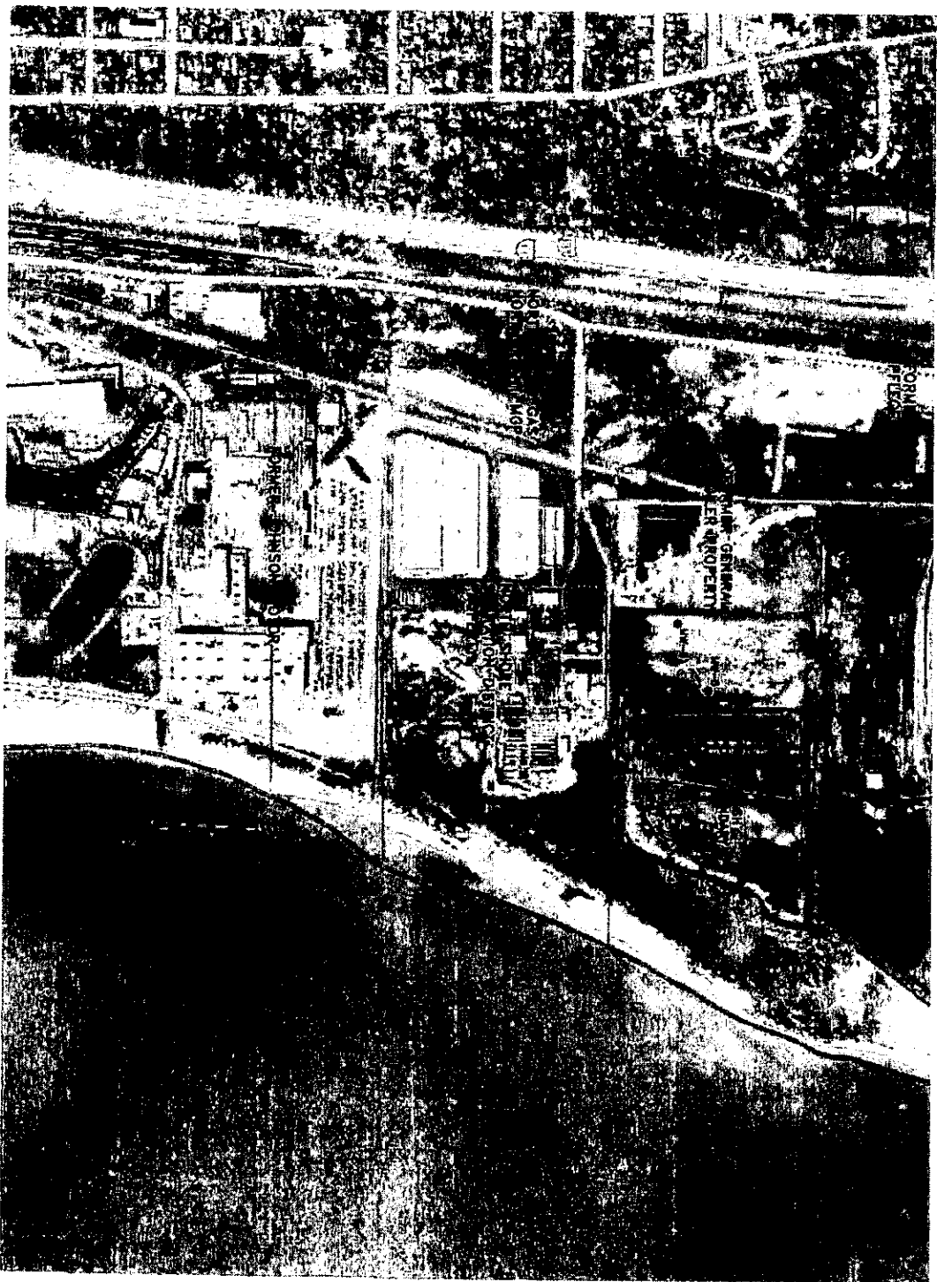
ENVIRONMENTAL CONSULTATION & REMEDIATION	
K P R G	KPRG and Associates, Inc.
414 Plaza Drive, Suite 106 Westmont, Illinois 60559 Telephone 630-325-1300 Facsimile 630-325-1593	
14665 West Livbon Road, Suite 28 Brookfield, Wisconsin 53005 Telephone 262-781-0475 Facsimile 262-781-0478	

1961 AERIAL PHOTO
ATTORNEY-CLIENT PRIVILEGE

WAUKEGAN STATION
WAUKEGAN, ILLINOIS

Scale: 1" = 900'	Date: January 14, 2013
------------------	------------------------

KPRG Project No. 18311.31	FIGURE 1
---------------------------	----------



0 900'
APPROXIMATE SCALE

ENVIRONMENTAL CONSULTATION & REMEDIATION		1974 AERIAL PHOTO	
<h1>KPRG</h1> <p>KPRG and Associates, Inc.</p> <p>414 Plaza Drive, Suite 106 Westmont, Illinois 60359 Telephone 630-323-1300 Facsimile 630-323-1593 14865 West Urban Road, Suite 28 Brookfield, Wisconsin 53005 Telephone 262-781-0475 Facsimile 262-781-0476</p>		ATTORNEY-CLIENT PRIVILEGE	
		WAUKEGAN STATION WAUKEGAN, ILLINOIS	
Scale: 1" = 900'	Date: January 14, 2013		
KPRG Project No. 18311.31	FIGURE 2		

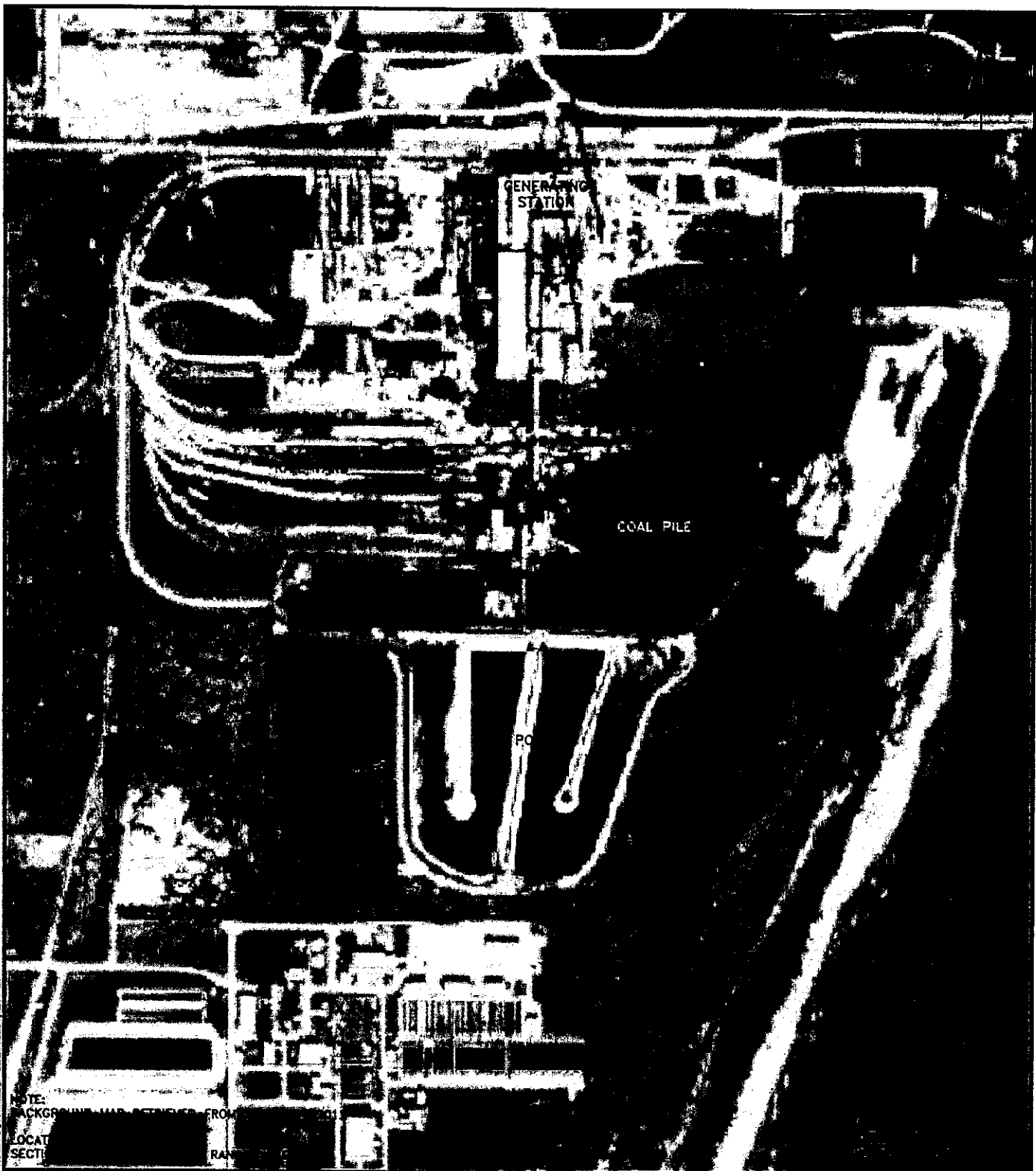
MWG13-15_14529



0 900'
APPROXIMATE SCALE

ENVIRONMENTAL CONSULTATION & REMEDIATION		1961 AERIAL PHOTO ATTORNEY-CLIENT PRIVILEGE	
<h1 style="margin: 0;">K P R G</h1> <small>KPRG and Associates, Inc.</small>		WAUKEGAN STATION WAUKEGAN, ILLINOIS	
<small>414 Plaza Drive, Suite 106 Westmont, Illinois 60559 Telephone 630-325-1300 Facsimile 630-325-1591</small>		Scale: 1" = 900'	Date: January 14, 2013
<small>14665 West Lisbon Road, Suite 28 Brookfield, Wisconsin 53005 Telephone 262-781-0475 Facsimile 262-781-0478</small>		KPRG Project No. 18311.31	FIGURE 1

MWG13-15_14530



NOTE:
 BACKGROUND MAP OBTAINED FROM
 LOCATED
 SECTION

ENVIRONMENTAL CONSULTATION & REMEDIATION

K P R G KPRG and Associates, Inc.

414 Plaza Drive, Suite 106 Westmont, Illinois 60559 Telephone 630-325-1300 Facsimile 630-325-1593

14665 West Lisbon Road, Suite 28 Brookfield, Wisconsin 53005 Telephone 262-781-0475 Facsimile 262-781-0478

GENERATING STATION SITE MAP

WAUKEGAN STATION
 WAUKEGAN, ILLINOIS

Scale: 1" = 500' Date: October 4, 2012

KPRG Project No. 18311.3

FIGURE 1